



PERFECTING THE JOURNEY



FALL 2017

T U M I F A L L 2 0 1 7



*Capturing the essence of
New York through the day-to-day
journeys and weekend escapes of four
quintessential New Yorkers.*





Tegra-Lite Max International Expandable Carry-On in Crimson, page 41.

DELPHINE DIALLO

VISUAL ARTIST

Delphine moved to New York from Paris 10 years ago with a clear idea of what she wanted to do. She had just finished assisting acclaimed photographer Peter Beard at a shoot in Botswana and knew she wanted to become an artist. "New York is a place where, when you are focused, there are very few chances you will fail," she says, and her body of work is proof that, for her at least, it's true. Though she claims that she doesn't relax ("I can never stop!"), in her downtime she collages, cooks for friends, and has dance parties at her loft and workspace in Bushwick, Brooklyn. Her current project, "Women of New York," is an ongoing series of portraits of women from all backgrounds.



Clairmont Packable Travel Puffer Jacket in Mink, page 45.



Capri Crossbody in Black Leather, page 16.

ALPHA BRAVO COLLECTION



KNOX BACKPACK
Blue Camo. Also in Hickory, Navy,
Anthracite, Dark Brown, Black
97262-T073
—
\$ 3 6 5



BUCKNER DUFFEL
Blue Camo. Also in Hickory
97259-T073
—
\$ 4 9 5



KIRTLAND INTERNATIONAL EXPANDABLE CARRY-ON
Blue Camo. Also in Hickory, Dark Brown
97200-T073
—
\$ 6 2 5



*Knox Backpack in Blue Camo. 19 Degree Aluminum
Continental Carry-On in Matte Black, page 41.*

"When I first moved to New York, I worked as a waitress. I decided I would study people and learn English. After a year and a half, I had enough work as a photographer to give up waitressing."





Hayward Triple Compartment Tote in Black.



Hayward Triple Compartment Tote in Black.



ALLENDALE DUFFEL
Black
101685-1041

—
\$ 5 9 5



**SAM INTERNATIONAL
EXPANDABLE CARRY-ON**
Bordeaux. Also in Black
101696-1124

—
\$ 6 9 5



HAYWARD TRIPLE COMPARTMENT TOTE
Bordeaux. Also in Black
101678-1124

—
\$ 4 9 5



From left: 19 Degree Aluminum Short Trip Packing Case, page 41.
Nell Tote in Electric Blue, page 10.





Aidan Crossbody in Burgundy, page 10.

SINCLAIR
COLLECTION



AIDAN CROSSBODY
Burgundy. Also in
Electric Blue, Black
101850-1153

—
\$ 295



NELL TOTE
Electric Blue. Also in Black,
Burgundy, Earl Grey
101851-1324

—
\$ 295



EMMA BUSINESS BRIEF
Black. Also in Burgundy,
Earl Grey
101843-1041

—
\$ 495



HANNE BACKPACK
Electric Blue. Also in Black,
Burgundy, Earl Grey
101848-1324

—
\$ 495



NITA COMMUTER BRIEF
Black. Also in Earl Grey
101841-1041

—
\$ 545

*"My creative life is at its peak
right now. Wearing a backpack in a
bold color keeps me inspired."*



Hanne Backpack in Electric Blue.

For Voyager Lindley Wristlet
in Gallery Floral, visit
www.tumi.com.



VANESSA PACKER

FOUNDER, MODELFIT

Vanessa's business exploded onto the Manhattan wellness scene in 2014 and quickly became the go-to fitness studio for the chic downtown set. A trained nutritionist who was born and raised in New York City, Vanessa lives in Soho, which means two things: one, she's close to her favorite macrobiotic restaurant, Souen Soho (insider tip: don't miss the vegan desserts), and two, she gets to walk to work every day ("a benefit of city life," she says). When she's not traveling back and forth to LA for work, Vanessa takes her downtime very seriously. "I love to go out—I could write a book on my favorite restaurants in New York."



Daniella Small Backpack in Grey Leather, page 14.



Nita Commuter Brief in Black, page 10.

VOYAGEUR LEATHER
COLLECTION



DANIELLA SMALL BACKPACK

Grey. Also in Black
96071-1408

—
\$ 395



HALLE BACKPACK

Grey. Also in Black
96068-1408

—
\$ 445



CAROLINA TOTE

Black. Also in Grey
96076-1041

—
\$ 395



LUANDA FLIGHT BAG

Grey. Also in Black
96079-1408

—
\$ 295



Halle Backpack in Grey Leather.

"I feel most myself when I'm in New York."





CAPRI CROSSBODY
Crimson. Also in Black, Gallery Floral,
Marine, Mink, Pine
99579-2065

—
\$195





Halle Backpack in Marine.



CALAIS BACKPACK
Gallery Floral. Also in Black, Crimson,
Marine, Mink, Pine
99549-T207

\$ 345



DANIELLA SMALL BACKPACK
Crimson. Also in Black, Marine,
Mink, Pine
99562-2065

\$ 275



NADIA CONVERTIBLE BACKPACK/SLING
Marine. Also in Black
99541-1531

\$ 245



M-TOTE
Pine. Also in Black, Crimson,
Gallery Floral, Marine, Mink
99907-1693

\$ 295



HALLE BACKPACK
Marine. Also in Crimson,
Mink, Pine
99567-1531

\$ 295



BREYTON WEEKENDER

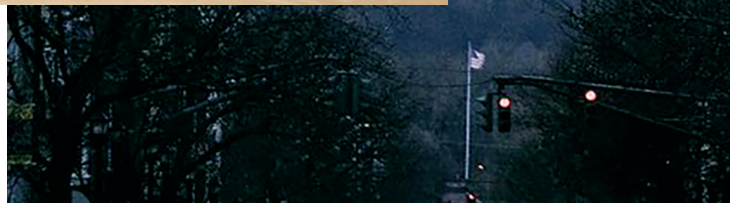
Marine. Also in Black
99915-1531

—
\$ 4 4 5

SUPER LEGER INTERNATIONAL CARRY-ON

Marine. Also in Black, Mink
99535-1531

—
\$ 5 4 5

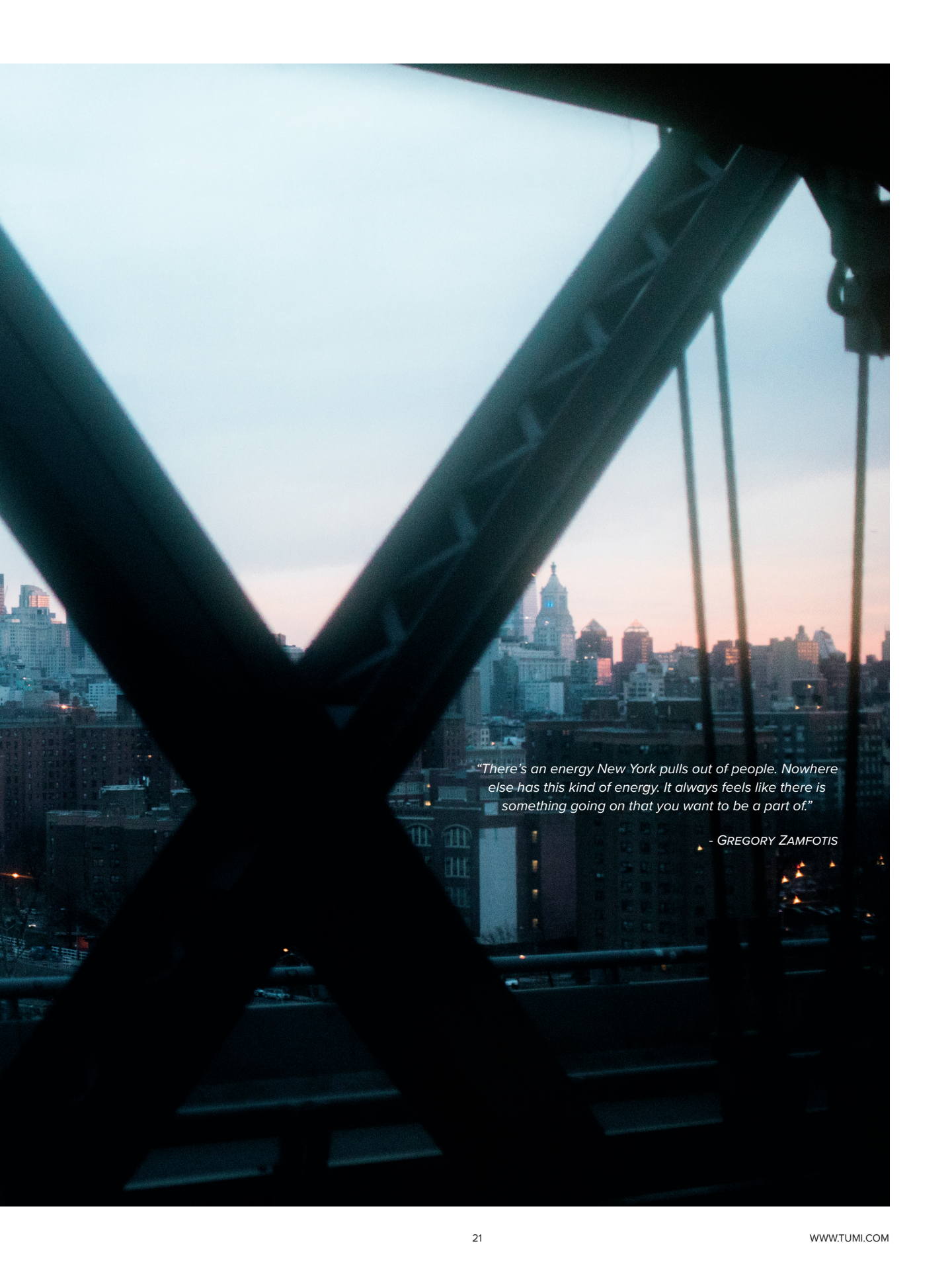


*"I love a tote that transitions well
from city to country life."*





The Empire State Building image® is a registered trademark of ESRT Empire State Building, L.L.C., and is used with permission.



"There's an energy New York pulls out of people. Nowhere else has this kind of energy. It always feels like there is something going on that you want to be a part of."

- GREGORY ZAMFOTIS



G R E G O R Y Z A M F O T I S

FOUNDER, GREGORYS COFFEE

As a kid who grew up working in his dad's New York City restaurants, Gregory didn't set out to follow in his father's footsteps. But after a stint in business school, he opened his first location of Gregorys Coffee and now owns 26 shops and a roasting and baking facility, overseeing 275 employees in all. Gregory lives in Tribeca with his wife and two-year-old son, has another kid on the way, and spends most of his week working to grow his coffee business ("Coffee is the lifeblood of this city," he says) so he can spend weekends with his young family.



Elwood Backpack in Urban Untitled Print, page 27.

HARRISON COLLECTION



WINSOR BACKPACK
Black Pebbled Leather.
Also in Black Nylon
100811-1041

—
\$ 545
\$325 (Nylon)



HORTON DOUBLE ZIP BRIEF
Black Leather. Also in Brown Leather,
Black Pebbled Leather
100808-1041

—
\$ 595



WEBSTER BACKPACK
Black Nylon. Also in Black Leather, Brown
Leather, Black Pebbled Leather
100956-1041

—
\$ 395
\$695 (Leather)



SENECA SLIM BRIEF
Black Nylon. Also in Black Leather, Brown
Leather, Black Pebbled Leather
100951-1041

—
\$ 345
\$495 (Leather)



Webster Backpack in Black Nylon.
Patrol Reversible Packable Travel Puffer
Jacket, page 45.



*"We go upstate with friends for R&R.
The weekend—that's family time."*



From left: Elwood Backpack and Ward Backpack, both in Urban Untitled Print.





V3 International Expandable Carry-On in Pacific Blue, page 41.



ELWOOD BACKPACK
Urban Untitled Print. Also in Black
101902-1041

—
\$ 295



BUTLER BACKPACK
Urban Untitled Print. Also in Black
101904-1041

—
\$ 345



WARD BACKPACK
Urban Untitled Print. Also in Black
101910-T545

—
\$ 375

BRAVO LEATHER
COLLECTION



Luke Roll-Top Backpack in Black.



ANDREWS SLIM BRIEF
Black. Also in Dark Brown
102182-1041

—
\$ 495



LUKE ROLL-TOP BACKPACK
Black. Also in Dark Brown
102163-1041

—
\$ 645



ANDERSEN SLIM COMMUTER BRIEF
Black. Also in Dark Brown
102182-1041

—
\$ 595



KNOX BACKPACK
Black. Also in Dark Brown
102187-1041

—
\$ 595



"It's a pretty simple life, to be honest. I work really hard during the week and focus mostly on my business. I appreciate a bag that can keep up with me."



Andersen Slim Commuter Brief in Black.



19 Degree Aluminum Continental Carry-On in Matte Black, page 41.

CARLOS COUTURIER

—
FOUNDER, GRUPO HABITA

Hotelier, contemporary art collector, citrus farmer: Carlos is a man of many talents. His hospitality company, Grupo Habita, owns 13 properties in Mexico, one in Chicago, and HotelAmericano, a boutique hotel located in the heart of Chelsea. Carlos divides his time between New York and Mexico City, but when he is here, he rides his bike everywhere rather than deal with traffic. As for the feeling he gets upon first arriving in New York? “I get anxious,” he deadpans. “I wish I could skip the whole airport experience and just parachute into midtown.”



Southington Backpack in Carbon, page 37.



Dresden Flap Backpack in Electric Blue, page 32.



DRESDEN FLAP BACKPACK
Cement White. Also in Electric Blue, Black, Grey
102229-T134

—
\$ 945



LENOX DUFFEL
Black Leather. Also in Grey Leather
102223-1041

—
\$ 995




**ARCADIA INTERNATIONAL
EXPANDABLE CARRY-ON**

Grey
98768-1408

—
\$ 1495



Dresden Flap Backpack in Electric Blue.



*"The dynamics of New York are unique.
It's a city that evolves by the minute.
It's multi- and mega-cultural. And I really
enjoy knowing we are by the sea—even if
you never see it."*



Sawyer Brief in Navy.
19 Degree iPhone Case, www.tumi.com.





Gatwick International Carry-On.
CFX Passport Case,
www.tumi.com.



SAWYER BRIEF
Navy. Also in Black, Black Leather
97912-1596
—
\$745
\$945 (Leather)



GRANTLEY BACKPACK
Navy. Also in Black
97923-1596
—
\$645



GATWICK INTERNATIONAL CARRY-ON
Navy. Also in Black
97948-1596
—
\$1295



**SOUTHINGTON
BACKPACK**
Carbon
98792-1164
—
\$ 645





SHAWNEE BRIEF

Carbon
98791-1164

—
\$1300

Bromley Portfolio Brief in Carbon.



BROMLEY PORTFOLIO BRIEF

Carbon
98789-1164

—
\$895



SOUTHINGTON BACKPACK

Carbon
98792-1164

—
\$1100



*"I bike everywhere, even in winter,
so I need a reliable bag."*

TUMI T-Pass Brief Pack in Navy/Black.



Double Expansion Travel Satchel in Navy/Black.



DOUBLE EXPANSION TRAVEL SATCHEL

Navy/Black. Also in Black,
Earl Grey
97020-1599

—
\$ 395



TUMI T-PASS BRIEF PACK

Navy/Black. Also in Black, Earl Grey,
Anthracite, Black Leather
98275-1596

—
\$ 495
\$ 675 (Leather)



**FRONT LID CONTINENTAL
CARRY-ON**

Navy/Black
97505-1599

—
\$ 675

HARDSIDE LUGGAGE
COLLECTION



19 Degree Aluminum in Silver and Blue.

FALL 2017

19 DEGREE POLYCARBONATE



INTERNATIONAL CARRY-ON
Silver. Also in Black, Bordeaux,
Glacier, White
97618-1776

—
\$ 595



SHORT TRIP PACKING CASE
Bordeaux. Also in Black, Glacier,
Silver, White
97622-1124

—
\$ 655

19 DEGREE ALUMINUM



INTERNATIONAL CARRY-ON
Blue. Also in Matte Black,
Rose Gold, Silver
98817-1090

—
\$ 995



CONTINENTAL CARRY-ON
Matte Black. Also in Silver
98820-4386

—
\$ 1095



SHORT TRIP PACKING CASE
Silver. Also in Blue,
Matte Black, Rose Gold
98821-1776

—
\$ 1195

TEGRA-LITE MAX



**INTERNATIONAL EXPANDABLE
CARRY-ON**
Black Graphite. Also in
T-Graphite, Crimson
98533-1060

—
\$ 695



**MEDIUM TRIP EXPANDABLE
PACKING CASE**
Black Graphite. Also in
T-Graphite, Crimson
98543-1060

—
\$ 895



**MEDIUM TRIP EXPANDABLE
PACKING CASE**
Crimson. Also in Black
Graphite, T-Graphite
98543-2065

—
\$ 895

V 3



**INTERNATIONAL EXPANDABLE
CARRY-ON**
Pacific Blue. Also in Black,
Blue Camo, Gallery Floral
97605-1652

—
\$ 525



**SHORT TRIP EXPANDABLE
PACKING CASE**
Blue Camo. Also in Black,
Pacific Blue, White
97607-T073

—
\$ 565



**INTERNATIONAL EXPANDABLE
CARRY-ON**
Gallery Floral. Also in Black,
Blue Camo, Pacific Blue
97605-T207

—
\$ 525

ACCESSORIES



Calais Backpack in Gallery Floral, page 17. Zip-Around Continental in Hot Pink, right.



Riley Kit in Blue Camo.



RILEY KIT
Blue Camo. Also in Hickory,
Dark Brown Leather
97179-T073

—
\$ 12 5



SPLIT TRAVEL KIT
Navy/Black. Also in
Earl Grey, Black
97083-1599

—
\$ 9 5



RAYMOND TRAVEL KIT
Grey
98777-1408

—
\$ 2 4 5



TRAVEL WALLET
Hot Pink. Also in Black, Marine
102259-1694

—
\$ 2 4 5



ZIP-AROUND CONTINENTAL
Hot Pink. Also in Black, Marine
102253-1694

—
\$ 19 5



FLAP CONTINENTAL
Hot Pink. Also in Black, Marine
102254-1694

—
\$ 19 5

OUTERWEAR



Clairmont Packable Travel Puffer Jacket in Mink. Halle Backpack in Mink, page 17.

PAX WOMEN'S MISSION COAT

Black/Navy
95571-1068

—
\$ 2 9 5



PAX MEN'S MISSION COAT

Black/Navy
95571-1068

—
\$ 2 9 5



**CLAIRMONT PACKABLE
TRAVEL PUFFER JACKET**

Crimson. Also in Mink, Black
95624-2065

—
\$ 1 9 5



**PATROL REVERSIBLE PACKABLE
TRAVEL PUFFER JACKET**

Blue Camo/Navy
95576-T073

—
\$ 2 4 5







TRAVEL SCALE
94235-1422
—
\$ 50



4-PORT USB TRAVEL ADAPTOR
93611-1041
—
\$ 125



TRUE WIRELESS EARBUDS
93600-1041
—
\$ 300



**WIRELESS NOISE
CANCELLING HEADPHONES**
93599-1041
—
\$ 300



**WIRELESS SPEAKER
WITH POWERBANK**
93598-1077
—
\$ 200



TUMI GLOBAL LOCATOR
Black
94191-1041
—
\$ 150

Any bag. Anywhere.™ Introducing the wireless tracking device designed to take the hassle out of travel and put peace of mind at your fingertips. TUMI Global Locator uses GPS, GSM, Wi-Fi and Bluetooth technology to provide location-positioning information to users via mobile interface. Knowing where your bags are at all times? Yes, please. Available in the U.S. only. Price does not include 1-Year Service Plan (\$50). For more information, visit www.tumi.com.



Clairmont Packable Travel Puffer Jacket in Mink, page 45. Halle Backpack in Mink, page 17.





PERFECTING THE JOURNEY

261 5TH AVENUE, SUITE 2106
NEW YORK, NY 10016

TUMI.COM | @TUMITRAVEL | #PERFECTINGTHEJOURNEY |   

We want you to be fully satisfied with every product that you purchase from TUMI.com. If you are not satisfied with a product that you have purchased, you may return it within 30 days of delivery for a full refund of the purchase price, minus the shipping, handling, gift box, and other charges where applicable. Please note: Monogrammed and personalized items, including TUMI Accents, cannot be returned. © 2017 TUMI, Inc.